

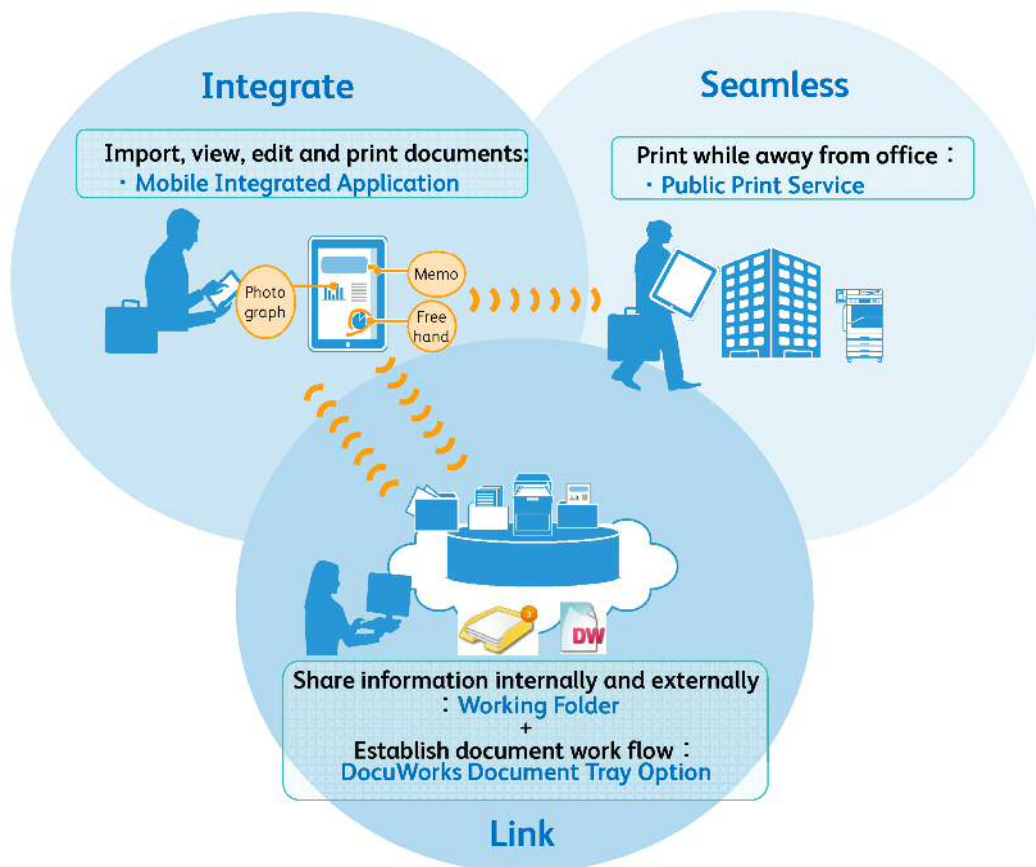
FOR IMMEDIATE RELEASE

**LAUNCHES SOLUTIONS AND SERVICES TO SUPPORT MOBILE WORKERS
WITH BUSINESS EFFICIENCY AND SPEEDY DECISION-MAKING****SEAMLESSLY CONNECTS OFFICES, MOBILE ENVIRONMENTS AND PUBLIC PRINTING
TO DELIVER VALUABLE COMMUNICATIONS**

TOKYO, January 16, 2013—As solutions and services that support mobile workers, Fuji Xerox Co., Ltd. will launch, in stages from January 25, new application software for tablet terminals, as well as a service that allows users to print documents while away from their offices.

Mobile Integrated Application for iOS, application software supporting document handling in mobile environments, provides an environment for viewing, editing and printing imported documents in an integrated manner. When linked with **Working Folder**, a cloud-based online storage service, it facilitates information-sharing with both within and outside of users' organization or with external corporations in a highly secure environment. Additionally, when Working Folder is linked with **DocuWorks*¹ Document Tray Option**, it enables users to easily build an environment for document handling based on their work flows across both inside and outside of their organization.

Furthermore, documents can be printed outside offices by linking with Fuji Xerox's **Public Print Service**, a service to output documents from digital multifunction devices installed in local government offices and such. The Company will help customers with valuable communications; enabling them to use information that they need, when they need it and in their preferred form.



Details of each solution/service:

◆ Mobile Integrated Application for iOS: supports effective document handling on iPad

Mobile Integrated Application for iOS—application software that supports document handling in mobile environments—will be released on January 30. It is a one-stop application software for directly importing documents scanned with Fuji Xerox multifunction devices or images taken with an iPad camera into the application, displaying and editing the imported content, printing it from multifunction devices, and sending it via email.

By integrating these functions that are required for document handling in a mobile environment, users can now easily handle documents that once required complicated procedures.

✓ User interface developed for ease of use assists mobile workers

The user interface allows users to operate with its highly-visible document thumbnails including drag and drop for moving and duplicating files as done on a computer. It also offers intuitive operation such as flicking to turn a page. Folders help organize files per usage.

✓ Editing image files and documents

Users can add hand-written text or draw highlight lines on PDF files or image files imported on an iPad. This function allows users to store files with added

comments or to email a file to give correction instructions. DocuWorks documents can be viewed and edited^{*2} with annotations such as memo by linking with DocuWorks Viewer Light for iPhone/iPad.

✓ **Printing/digitizing documents with a multifunction device in the office**

Users can print documents that are stored on an iPad from a digital multifunction device in the office, as well as to scan paper documents into the iPad from a digital multifunction device. Both paper and digital documents can be handled.

✓ **Links with document management system and cloud-based storage to assist mobile working styles**

Links with a document management system, DocuShare, as well as with a cloud-based storage service, Working Folder. For example, a mobile worker can retrieve necessary documents from DocuShare before leaving the office and place them in the iPad via the Mobile Integrated Application. While working outside the office, the mobile worker can then connect to Working Folder to give/retrieve documents with people both in and out of the organization. This facilitates information-sharing, thereby supporting mobile workers with quick decision making while not tying them down to one location.

◆ **Strengthening cloud service for further sharing and use of information**

Starting January 25, an enhancement of the existing cloud-based storage service Working Folder, and the latest version of DocuWorks Document Tray Option with an added link to Working Folder, will be launched.

DocuWorks Document Tray Option is DocuWorks' optional software that allows users to deliver electronic documents, intuitively and smoothly, via a virtual document tray. When linked with Working Folder, a user can access a folder in the Working Folder from a Document Tray on the DocuWorks' desktop. This enables the delivery of documents, via the Document Tray, between registered members inside and outside of an organization, thus helping visualize and speed up the document work flow among business partners.

In order to build a safe access environment, the enhanced Working Folder can restrict access from mobile terminals (Android terminals only). Together with the conventional method of limiting access using IP addresses, the enhanced function allows access control according to the security needs of each user.

◆ **Meeting the need for printing while away from the office**

To seamlessly connect offices and mobile environments and to better satisfy the need for printing documents while away from the office, Fuji Xerox will launch the Public Print Service as well as digital color multifunction series^{*3} exclusive for this use, from February 11 and begin providing them in stages.

With Public Print Service, a user can upload documents^{*4} into a cloud server that he/she wishes to print from a PC or a mobile terminal^{*5} and then print them from a multifunction device in a public space, such as a local government office, university, store, hotel or café. Print fee can be paid by inserting coins into a slot of a device connected to the multifunction device or by using an IC rail pass cards^{*6}.

Additionally, by linking with the cloud-based storage service, Working Folder, a user not only can share documents but also print them out of office. For example, a mobile worker can print quotations or reference documents and give them to his/her customers without having to return to the office. This enables the mobile worker to spend more time visiting customers and improves business efficiency by getting the job done without having to spend time going back to the office.

- *1: Fuji Xerox's document handling software that allows centralized management and use of electronic documents and scanned paper-based documents on PCs.
- *2: Paid option is required to edit DocuWorks documents.
- *3: DocuCentre-IV C4475 A / C3375 A / C2275 A
- *4: Printable formats are DocuWorks, PDF, XPS, and MS-Office 97-2010.
- *5: Supported browsers on PC: Windows IE8/9/10, Mozilla FireFox 17/ESR17
Supported OS on mobile terminals: iPad/iPhone (iOS 5.0-6.0.1), Android 2.2./2.3/4.0
- *6: Valid IC cards include Suica and PASMO. For information of other transportation companies' IC cards, visit Fuji Xerox website.
 - PASMO is a registered trademark of PASMO Co., Ltd.
 - Suica is a registered trademark of East Japan Railway Company.
 - Approval Nos. 67 and 68 for Suica use from East Japan Railway Company.
 - The approval does not mean that East Japan Railway Company guarantees the content and quality of these products/services.
 - Suica card may be exchanged without prior notification due to East Japan Railway Company's own reasons.

Mobile Integrated Application for iOS

List Prices:

Product name	List price (before tax)
Mobile Integrated Application for iOS 2.0 Japanese edition/ 5 licenses	50,000 yen
Mobile Integrated Application for iOS 2.0 Japanese edition/ 10 licenses	100,000 yen
Mobile Integrated Application for iOS 2.0 Japanese edition/ 20 licenses	160,000 yen
Mobile Integrated Application for iOS 2.0 Japanese edition/ 50 licenses	320,000 yen
Mobile Integrated Application for iOS 2.0 Japanese edition/ 100 licenses	600,000 yen
Mobile Integrated Application for iOS 2.0 Japanese edition/ 300 licenses	1,560,000 yen
Mobile Integrated Application for iOS 2.0 Japanese edition/ 500 licenses	2,450,000 yen
Mobile Integrated Application for iOS 2.0 Japanese edition/ 1,000 licenses	4,300,000 yen

Note: Registration to Apple's iOS Developer Program (iDEP) is required in order to use the Mobile Integrated Application.

DocuWorks Document Tray Option 1.2 Japanese Edition

List Prices:

Product name	List price (before tax)
DocuWorks Document Tray Option 1.2 / Single-license basic package	3,800 yen
DocuWorks Document Tray Option 1.2 / Five-license basic package	11,000 yen
DocuWorks Document Tray Option 1.2 / Ten-license basic package	20,000 yen
DocuWorks Document Tray Option 1.2 / Twenty-license basic package	36,000 yen

Public Print Service

List Prices:

Product name	List price (before tax)
DocuCentre-IV C4475 A	1,920,000 yen
DocuCentre-IV C3375 A	1,570,000 yen
DocuCentre-IV C2275 A	1,320,000 yen

Availability:

Mobile Integrated Application for iOS and Working Folder are available in Japan and the Asia-Pacific. DocuWorks Document Tray Option 1.2 Japanese Edition and Public Print Service are currently only available in Japan.

- Android is a trademark of Google Inc.
- iPhone, iPad, and iPod touch are trademarks of Apple Inc.
- The trademark of iPhone is used based on the licensing agreement with Aiphone Co., Ltd.
- DocuWorks and document handling are registered trademarks or trademarks of Fuji Xerox Co., Ltd. in Japan and other countries.
- Other names of goods and services listed in this press release are the registered trademarks or trademarks of respective companies.

###