

FOR IMMEDIATE RELEASE

SKYDESK SERVICE OFFERS NEW FEATURES TO EFFICIENTLY SUPPORT COMMUNICATION BY ENHANCING INFORMATION SHARING ENVIRONMENT THAT FITS USER OBJECTIVES

**LAUNCHES PAID DOCS SERVICES TO SUPPORT
ORGANIZATIONAL BUSINESS COMMUNICATIONS**

TOKYO, July 10, 2012— Fuji Xerox Co., Ltd. today begins offering new paid services for the Docs (online document sharing and management) application of its SkyDesk Service^{*1}, a business communication support service that was launched free of charge on August 23, 2011. The new SkyDesk Docs Standard and SkyDesk Docs Premium enhance the Docs functions and organizational utilization.

SkyDesk Docs is a service that stores and manages various documents and files in online storage areas. Unlike simple file storages, the document files stored in SkyDesk Docs are linked with SkyDesk Writer (document creation), Sheet (spreadsheet), Show (presentation) and other kinds of applications, allowing users to view and edit the documents online. It also enables collaborative work through chats and comment-adding functions while multiple members simultaneously view and work on the same document online.

SkyDesk Docs Standard

Increasing storage capacity according to usage status

The storage capacity is increased to five gigabytes with SkyDesk Docs Standard (one gigabyte was the maximum capacity with the free service). File storage capacity can be increased in accord with the increase of members within a unit—formed with members who are registered to SkyDesk—or by how much storage is used to store and share files. The capacity for a single upload is also increased to 250 megabytes, enabling large file uploads such as voice/movie data (50 megabytes was the maximum with the free service).

Promoting more streamlined information sharing with the use of Work Space

Work space, which is a file sharing cabinet of SkyDesk Docs, can now be registered to a maximum of 10. This supports easy and efficient information sharing among registered members by allowing them to configure shared settings according to project details and the type of data to be shared.

SkyDesk Docs Premium

SkyDesk Docs Premium offers up to 20 work spaces. Users can also utilize the external sharing function that enables non-SkyDesk users to share or download SkyDesk Docs documents and files through a browser, enhancing streamlining support for working environments with greater scale.

^{*1} Utilizing public cloud, SkyDesk Service offers applications required in a diverse range of business communications for the small- and medium-sized business (SMB) market.

How to Purchase the Paid Services

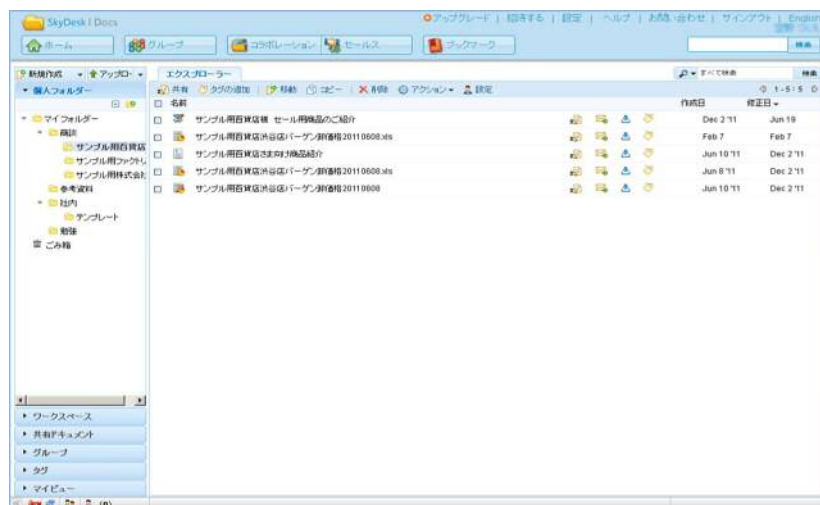
- Via online with a credit card.

List Prices

SkyDesk Docs

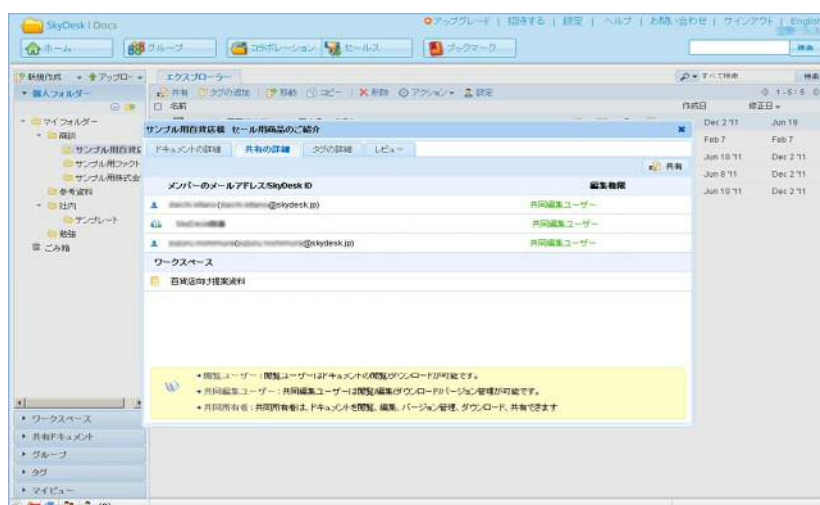
| Product names | List prices (before tax) | Contract format |
|-----------------------|----------------------------------|--|
| SkyDesk Docs Standard | 12,600 yen / system / six months | Semiannual contract (automatic renewal) |
| SkyDesk Docs Premium | 25,000 yen / system / six months | |

Fig. 1: Screen of SkyDesk Docs



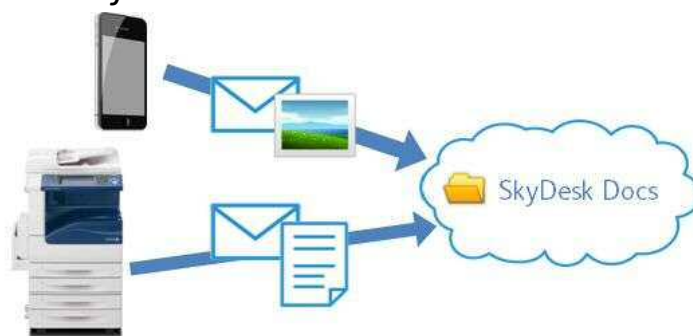
By creating folders with hierarchical structures, stored files can be dragged and dropped there in the same manner as a local environment. The files can be viewed per category; such as whether they are your own documents, shared documents, or per file types. Various information on the files is retained, for example, the file's background, summary, and who the owner is, enabling access from different purposes and approaches.

Fig. 2: Sharing Files to SkyDesk Docs Members



The owner of a file can configure settings to limit access only to members and groups s/he wants to share the file with. Shared settings can be made to individuals or in units of groups.

Fig. 3: Image of the SkyDesk Docs Mail-in Function



Photos taken with mobile phones or documents scanned on multifunction devices can be uploaded to Docs by sending an email attached with such files to a specified address.

Note: Applicable file formats differ per plan. Please refer to the functional comparison chart.

Functional Comparison Chart per Plan

SkyDesk Docs

| Plan names | Free service | Standard | Premium |
|--------------------------------------|--------------------------|--------------------------|--------------------------|
| Storage capacity | 1GB/unit ^{*2} | 5GB/unit | 5GB/unit |
| Additional storage | - | 5GB/unit ^{*3*4} | 5GB/unit ^{*3*4} |
| File size that can be uploaded | Max. 50MB/file | Max. 250MB/file | Max. 250MB/file |
| Bundled upload | - | Available | Available |
| Work space | 1 | 10 | 20 |
| External sharing | - | - | Available |
| Mail-in | PDF/JPEG/TIFF files only | PDF/JPEG/TIFF files only | All file formats |
| Virus scan | Available | Available | Available |
| Archives (compression/decompression) | Available | Available | Available |
| SSL support | Available | Available | Available |

^{*2} For individual users who have not formed a unit, the limit will be 1GB/person.

^{*3} Storage capacity can be added in increments of 5GB/unit by additionally purchasing the same paid service as the one being used.

^{*4} To add storage space of 100GB/unit or more, please inquire via:
<http://www.skydesk.jp/ja/contact/sales-inquiry.html>

Related websites (Japanese only)

- About SkyDesk Docs (paid service)
<https://www.skydesk.jp/ja/store/release/docs.html>
- About SkyDesk CRM (paid service)
<http://www.skydesk.jp/ja/store/release/crm.html>
- About SkyDesk Mail Standard (paid service):
<http://www.skydesk.jp/store/release/mail.html>
- About SkyDesk Cards Professional (paid service):
<http://www.skydesk.jp/store/release/cards.html>
- Service information:
<http://www.skydesk.jp>
- SkyDesk videos:
<http://www.skydesk.jp/about/videos.html>
- SkyDesk official Twitter handle:
http://www.twitter.com/FujiXerox_SD
- SkyDesk official Facebook page:
<http://www.facebook.com/FujiXerox-SkyDesk>
- For inquiries:
<http://www.skydesk.jp/contact/>

###