

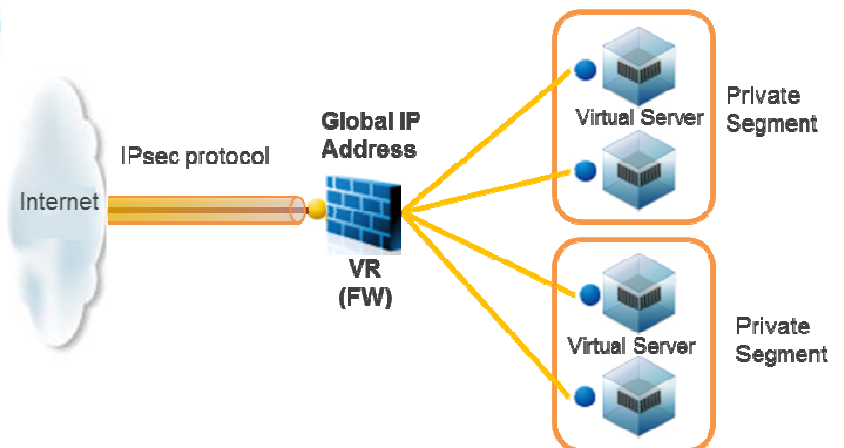
Attachment 1

VPC Type OpenNW

Suitable for designing a network, such as an Internet private segment, flexibly on cloud delivery infrastructure, such as an electronic-commerce website, game and web system that require IPsec (internet VPN) connection and private segment configuration.

“Compute (VPC Type OpenNW)”

A virtual router (VR) is allocated to each customer contract for “Compute (VPC Type OpenNW)”. The service's network system enables the VR to have multiple private segments for backend systems, such as a database not accessible from the Internet. Highly reliable system configurations are possible with IPsec.

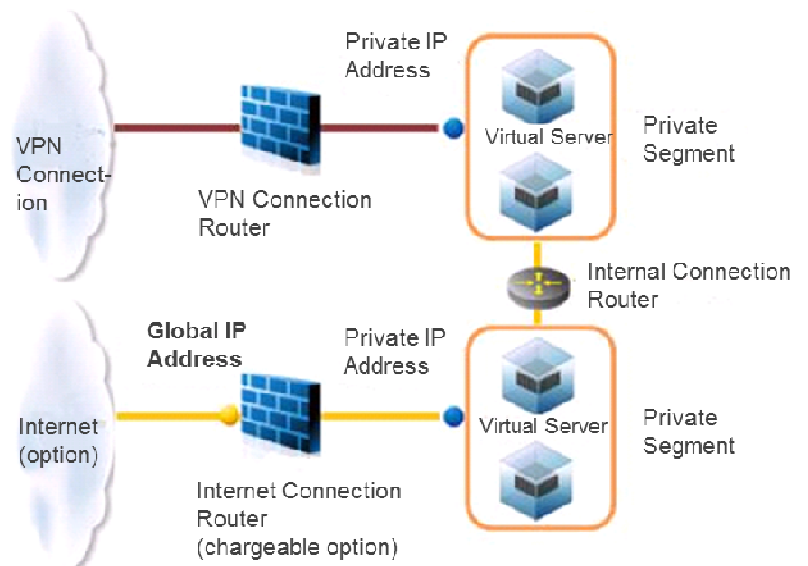


VPC Type ClosedNW

Suitable for configuring a system that uses an intranet connection (Arcstar Universal One) on a SaaS system infrastructure, and an intranet system structure that requires an intranet connection.

“Compute (VPC Type ClosedNW)”

“Compute (VPC Type ClosedNW)” is suitable for networks that accept Internet-connection and VP-connection routers. A secure intranet can be established via a closed network, a DMZ environment with a closed network and the Internet, and flexible segments with virtual routers.



Attachment 2

■ virtual server fees (incl. consumption tax) for “Compute (VPC Type OpenNW)”

Plan	vCPU	Memory	Per Hour		Monthly Max.
Plan v1	1	2GB	In-use	JPY 7.98	JPY 3,780
			Not in-use	JPY 4.2	
Plan v2	2	4GB	In-use	JPY 15.96	JPY 7,560
			Not in-use	JPY 8.4	
Plan v4	4	8GB	In-use	JPY 31.92	JPY 15,120
			Not in-use	JPY 16.8	
Plan v8	8	16GB	In-use	JPY 63.84	JPY 30,240
			Not in-use	JPY 33.6	

■ Virtual server fees (incl. consumption tax) for “Compute (VPC Type ClosedNW)”

Plan	vCPU	Memory	. Per Hour		Monthly Max.
Plan v1	1	2GB	In-use	JPY 11.13	JPY 5,250
			Not in-use	JPY 5.88	
Plan v2	2	4GB	In-use	JPY 22.26	JPY 10,500
			Not in-use	JPY 11.76	
Plan v4	4	8GB	In-use	JPY 44.52	JPY 21,000
			Not in-use	JPY 23.52	
Plan v8	8	16GB	In-use	JPY 89.04	JPY 42,000
			Not in-use	JPY 47.04	